



Upload your map in xFM for field analytics

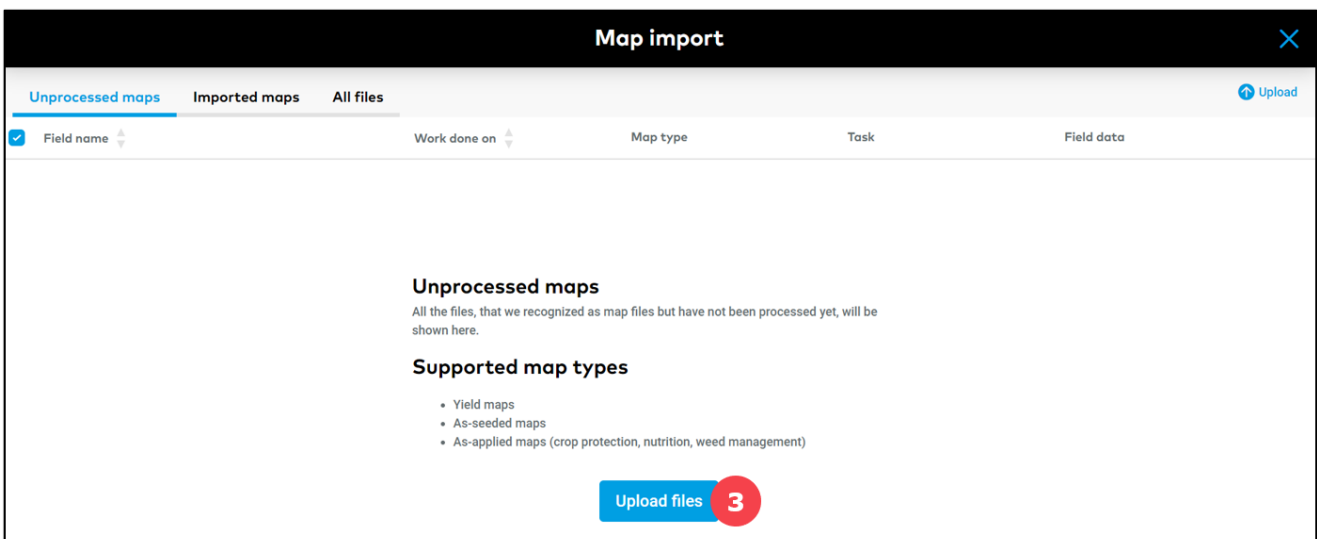
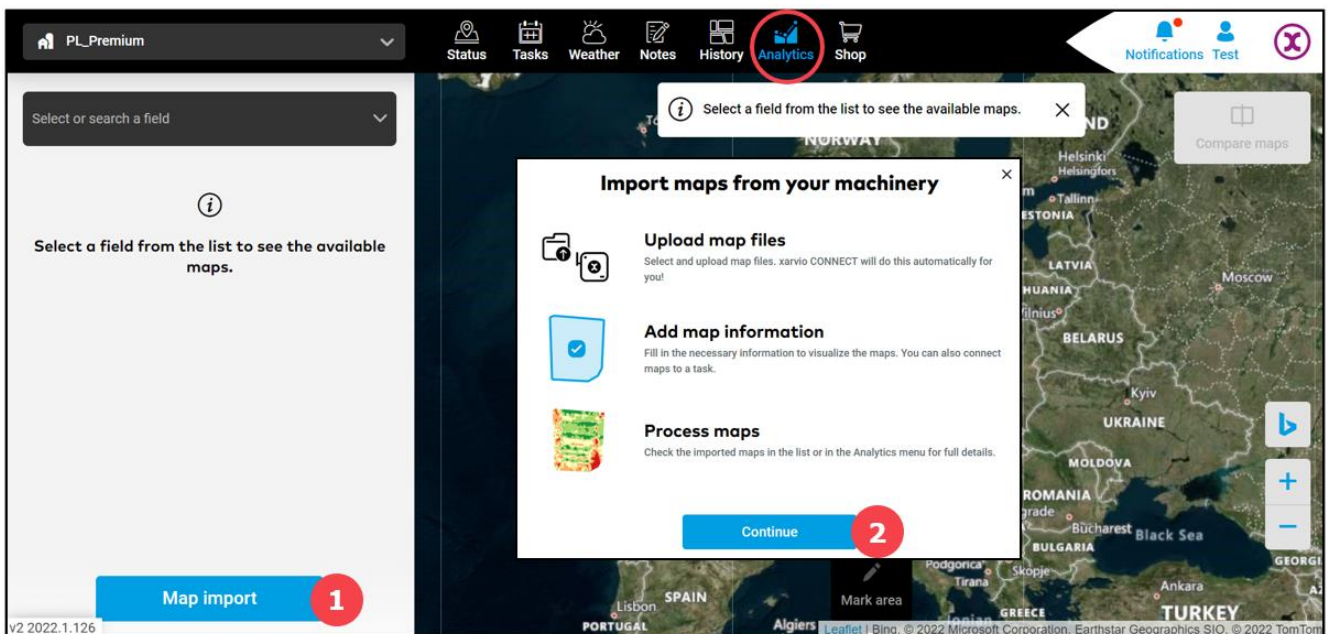
The **analytics section** enables you to view and compare the different maps provided by xarvio FIELD MANAGER, as well as those (as-applied, yield, seeding, soil maps) added by a user after completing a task on their farm.



xarvio FIELD MANAGER supports following types of map files: .shp, .ISOxml and Claas AFT format.

To add your own maps, follow the steps below:

- Log into xarvio FIELD MANAGER and navigate to **Analytics** section.



1. Click to go to **import map** window.
2. Map import options; click **Continue** to proceed.
3. You will be redirected to the map import window. Here, click the button **upload files** to add your map files.

- Alternatively, go to **Task** or **History status** to upload an as-applied map.

Task page

In this section, you can **upload as-applied maps** for already completed tasks (spraying, seeding and nutrition tasks) in order to generate for example **application accuracy map**.

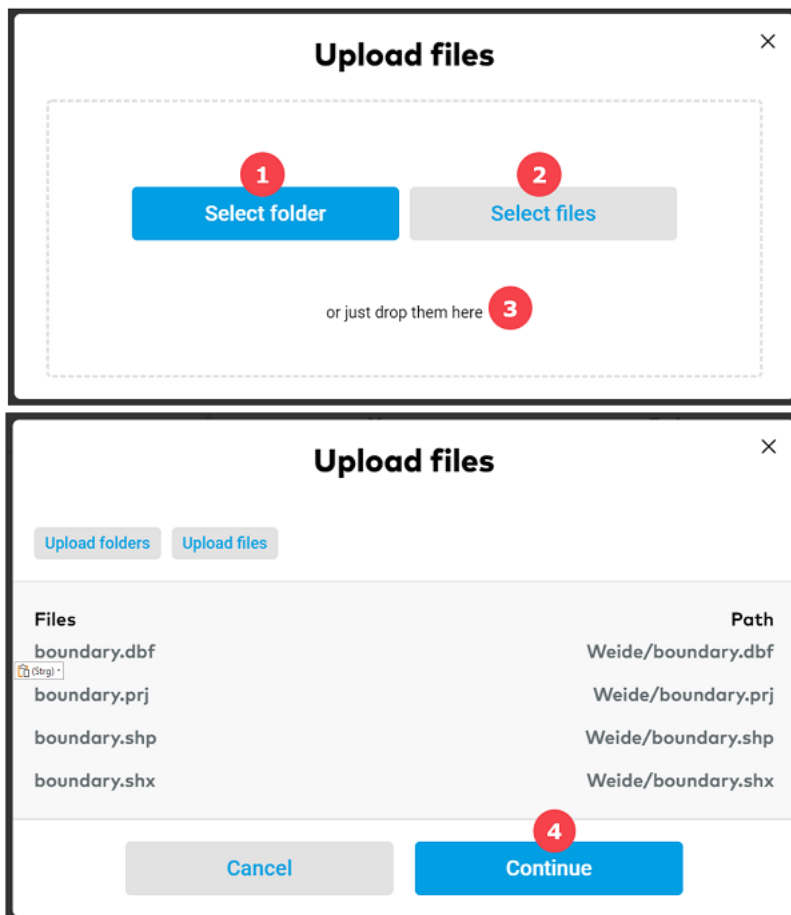
- Navigate to **Task** section.
- From list or calendar view, select filter **STATUS** and tick in **Completed**.
- Select a task** from the list.
- Choose the **Upload as-applied map** option.

History section

Here, you have the opportunity to add **every possible map type** for a given crop season.

- Go to **History** section.
- Click on the bar representing a **crop season** next to particular field.
- Choose **Upload new map**.

- After selecting any of the above upload options, a new window will appear. Here, you can add your map files.

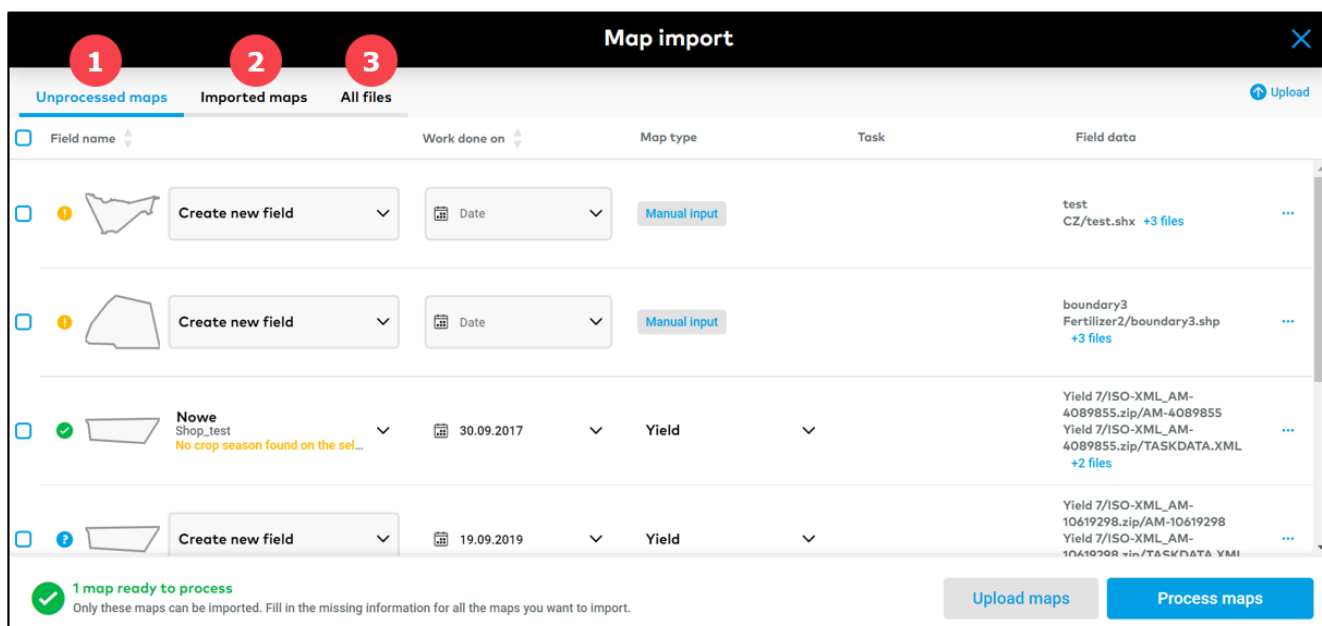


1. Click to **select folder** with map(s) files
2. Click to directly **select map's** files.

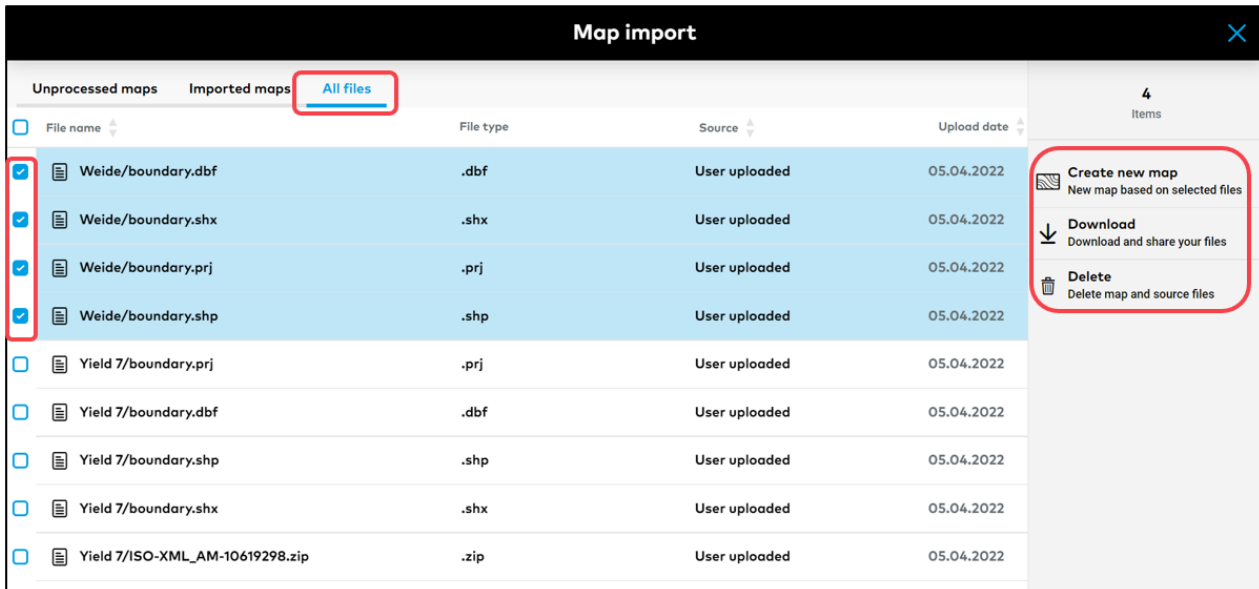
Or

3. **Drag and drop files** within the highlighted field.
4. Once all your selected files have been uploaded, click **Continue** to proceed.

- After the files have been successfully uploaded, you will see your maps in **Unprocessed maps** tab. Uploaded files will be divided into **three tabs**.



1. **Unprocessed maps** - all files that system recognized as map files but have not been processed yet. Firstly, here you will have to assign all missing information to the map and process it once it is ready to import (marked green).
2. **Imported maps** - here you will find all proceed, ready to use maps. You will also find them in Analytics to get more details and comparison.
3. **All files** - All uploaded files are listed here. This section contains also unrecognized map file. Here you can create a new map based on selected files or delete files.



- o To receive a fully valuable, suitable for analysis map, you need to process uploaded map files first.

Please keep in mind that depending on the original map files, some maps are ready to process, other might need entering some information from you.

Ready-to-import maps

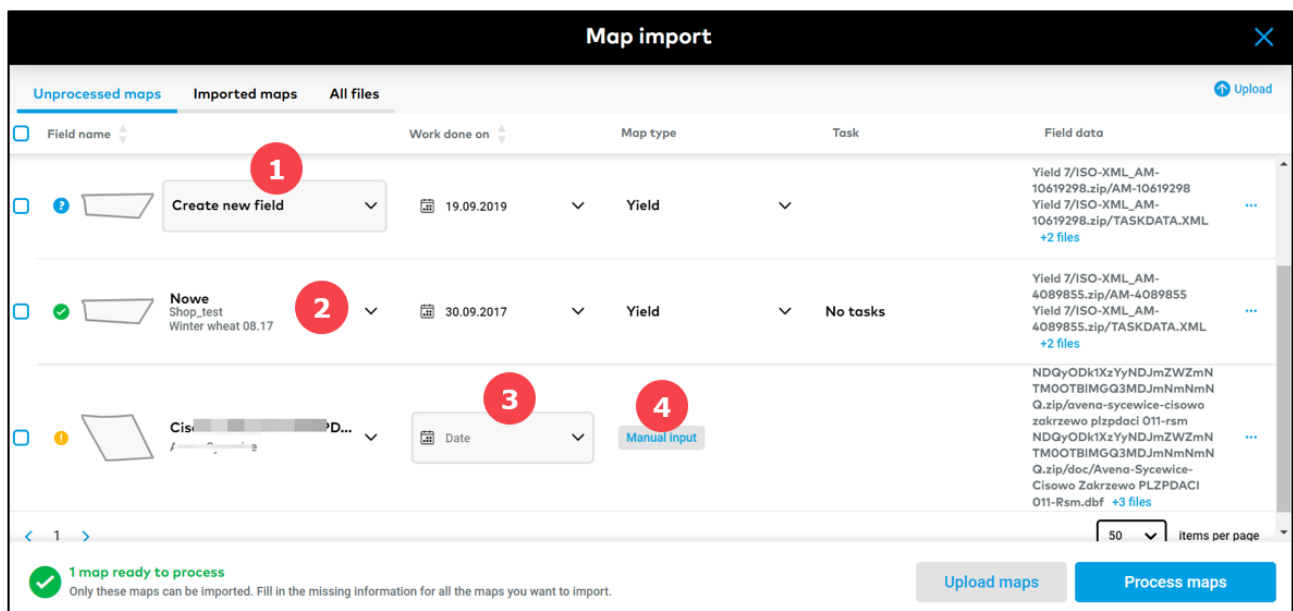
All the information is read or estimated based on the file data. You can always review and change the estimations before processing.

Maps with partial information

Some data was read, some could be estimated but you need to enter more information to process the maps.

Maps with missing data category

We need your manual input to be able to visualize these maps. To import them, select at least one data category in the map details.



1. In this case, it is only necessary to **create a field boundary** (field boundary doesn't exist in FIELD MANAGER). System will generate it automatically based on a map file. Choose only the farm, name your field and save it.



2. This map is **ready to process** - all data is correctly assigned to it.
3. Here it is essential to enter the **date of treatment performance**.
4. Click to manually **assign all missing information**.

○ Start **entering the missing data**.



Depending on the terminal and the file format, map files can contain different number of data. To be able to import the map, select at least one category and the matching unit. You can have a look at how the raw data looks. Check the column headers and the first 3 values, and select what you want to see in this map.

1. Enter the **date** of map creation (task execution date) if you didn't enter it in the previous step.
2. From the drop-down list, select **type of map** (as-applied, yield).
3. Match **previously added application** task with as-applied map.
4. Select at least one **category** and the **unit**.
5. Click to enter **additional**, available **information** for example.: vehicle speed, vehicle heading etc.
6. Once done, click **Save changes**.

- When all of your maps are ready to import (will be marked green), click **Process maps**.

Map import

Unprocessed maps Imported maps All files Upload

Field name	Work done on	Map type	Task	Field data
<input checked="" type="checkbox"/> New_field1 PL_Premium1 No crop season found on the sel...	19.09.2019	Yield		Yield 7/ISO-XML_AM-10619298.zip/AM-10619298 Yield 7/ISO-XML_AM-10619298.zip/TASKDATA.XML +2 files
<input checked="" type="checkbox"/> Nowe Shop_test Winter wheat 08.17	30.09.2017	Yield	No tasks	Yield 7/ISO-XML_AM-4089855.zip/AM-4089855 Yield 7/ISO-XML_AM-4089855.zip/TASKDATA.XML +2 files
<input checked="" type="checkbox"/> C Avena sycewice Oilseed rape 08.13	23.03.2022	As-applied Nutrition	Nutrition 22.03.2022	NDQyODk1XzYyNDJmZWZmNT MOOTBIMGQ3MDJmNmNmNQ. zip/avene-sycewice-cisowo zakrzewo plzpdaci 011-rsm NDQyODk1XzYyNDJmZWZmNT MOOTBIMGQ3MDJmNmNmNQ. zip/doc/Avena-Sycewice-Cisowo Zakrzewo PLZPDACI 011- Rsm.dbf +3 files

3 maps ready to process
Only these maps can be imported. Fill in the missing information for all the maps you want to import.

Upload maps **Process maps**

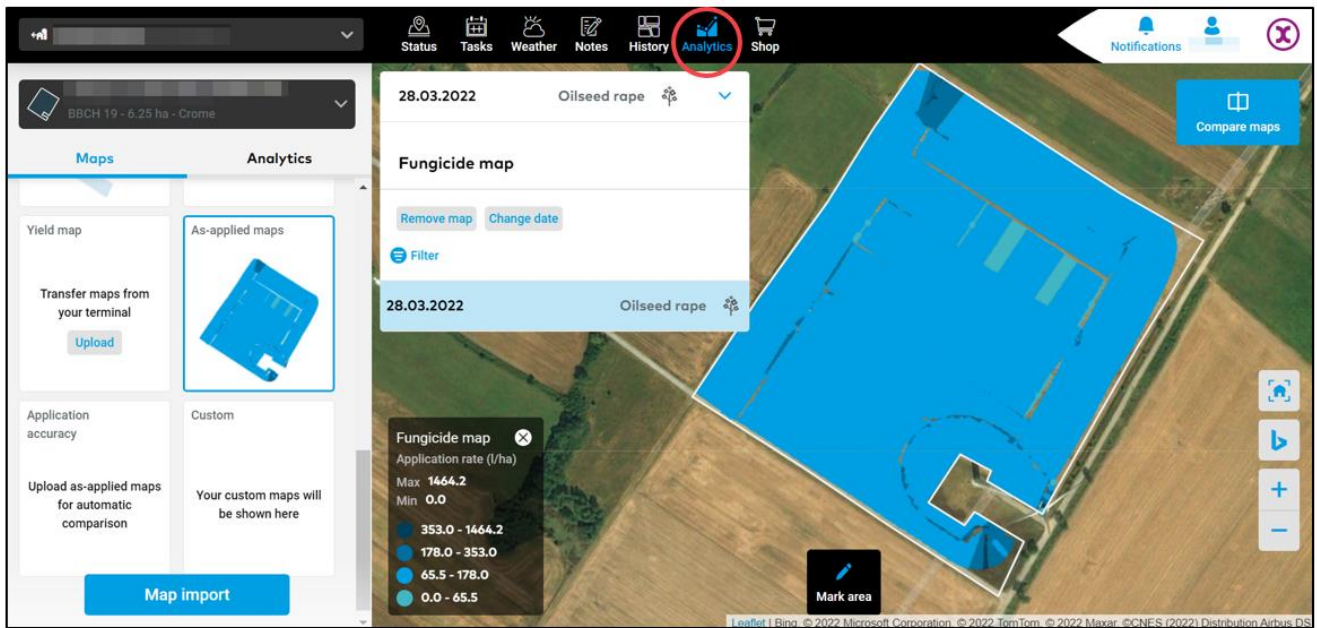
- After that you will be automatically redirected to the **Imported maps** tab, where you can view the processed maps (if the maps are still not visible, refresh the page).

Map import

Unprocessed maps Imported maps All files Maps processed and imported - also visible in the Analytics menu Upload

Field name	Work done on	Map type	Task	Date added
<input type="checkbox"/> N... 011 Av...	28.03.2022	As-applied Crop protection	No tasks	29.03.2022
<input type="checkbox"/> N... Y 019 At...	28.03.2022	As-applied Crop protection	No tasks	29.03.2022
<input type="checkbox"/> N... 015 A...	28.03.2022	As-applied Crop protection	No tasks	29.03.2022
<input type="checkbox"/> N... A...	28.03.2022	As-applied Crop protection	No tasks	29.03.2022
<input type="checkbox"/> N... 7 A...	28.03.2022	As-applied Crop protection	No tasks	29.03.2022
<input type="checkbox"/> N... A...	28.03.2022	As-applied Crop protection	No tasks	29.03.2022

- Generated map can be found also in the **Analytics** section.



Have you got any questions?
We are here for you!

Toll free phone: +49 30 22957857
Email: support@xarvio.info
© 2022