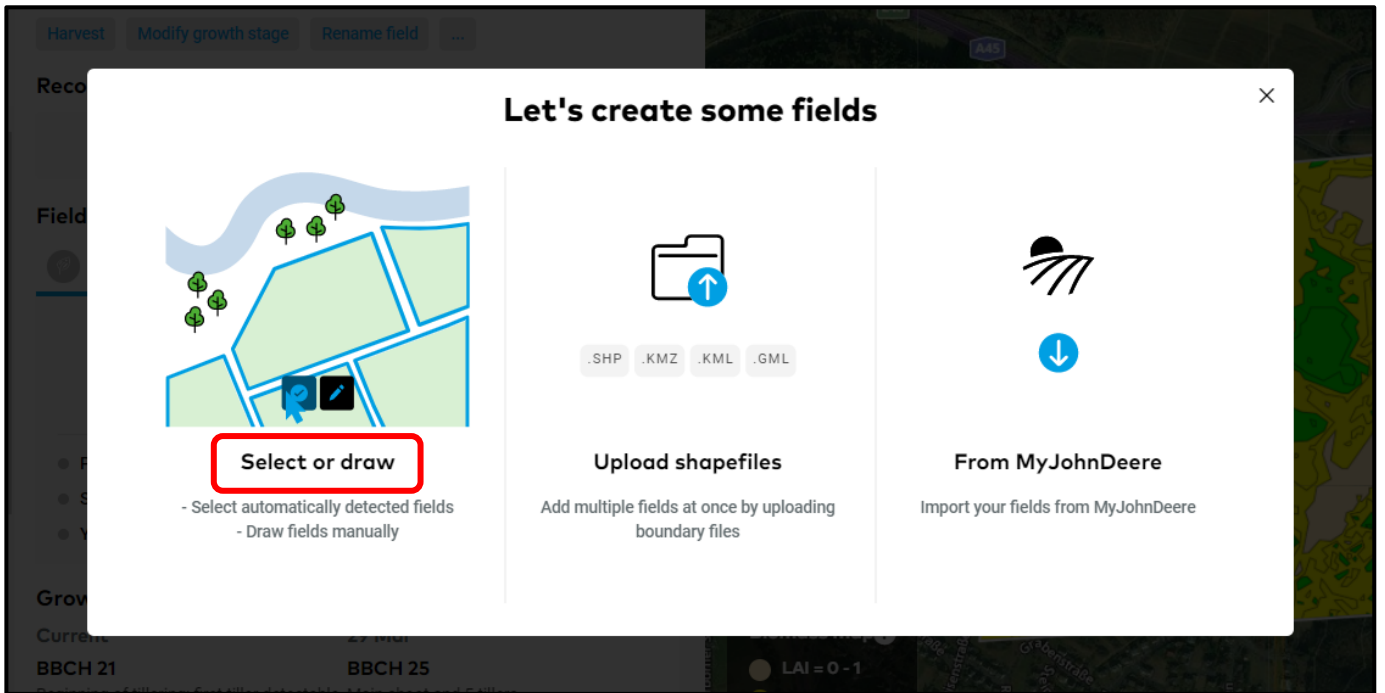




Draw a field

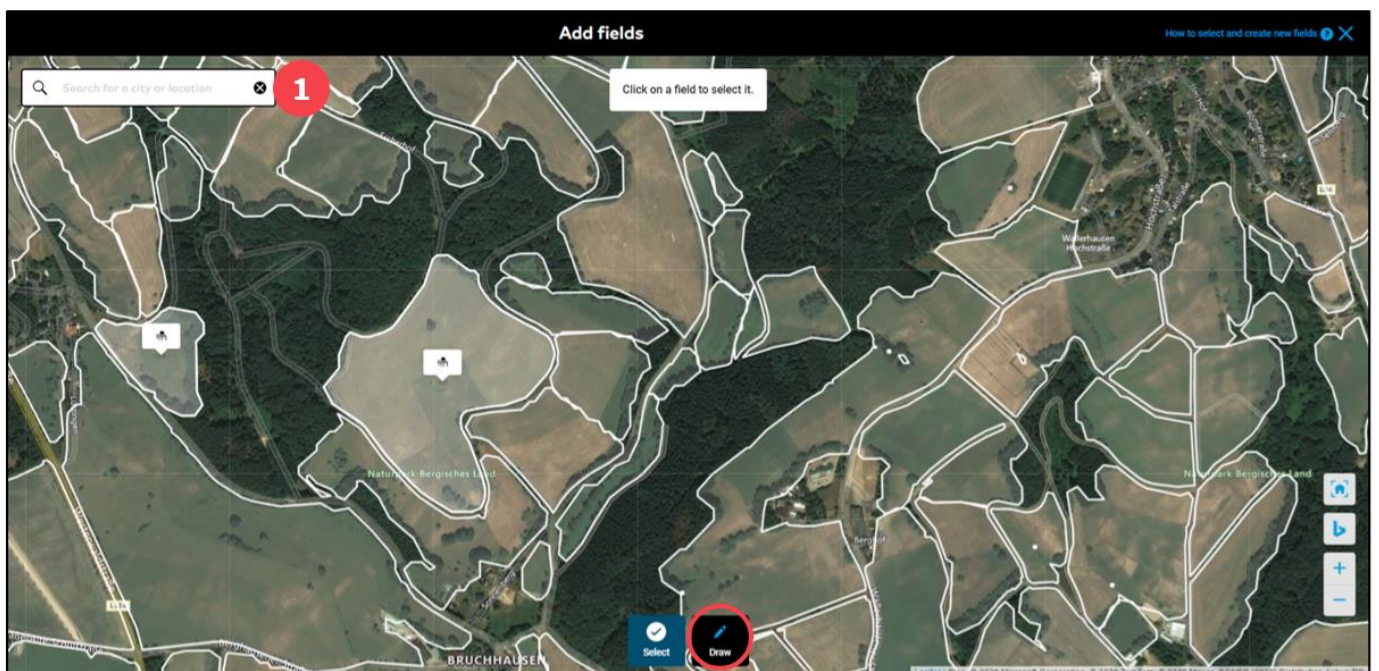
With this option, one can draw a field simply by clicking on the map and adding points which are automatically connected by a straight line to form the field boundary. After logging into xarvio FIELD MANAGER, click on **Add fields** on the **Status** page.

- After logging into xarvio FIELD MANAGER, click on **Add fields** (bottom left corner of the **Status** page).
- From the pop-up screen, click on the **Select or draw** option.



Zoom in to start drawing your fields.

- Click **Draw** to change from selecting automatically detected boundaries.



1. Search for your fields using the name of location or zip code.

- Click on the map and add points along the boundary of your field. You can add as many points as you need to draw the field precisely.
- To close the boundary, click on the first point you added.



1. Shows the size of the field and if required, you can click to delete the field drawn.

2. Helps you **Undo** or **Redo** any step.

3. **Simplifying boundaries** – This helps you to reduce the boundary points to make the shape simpler.

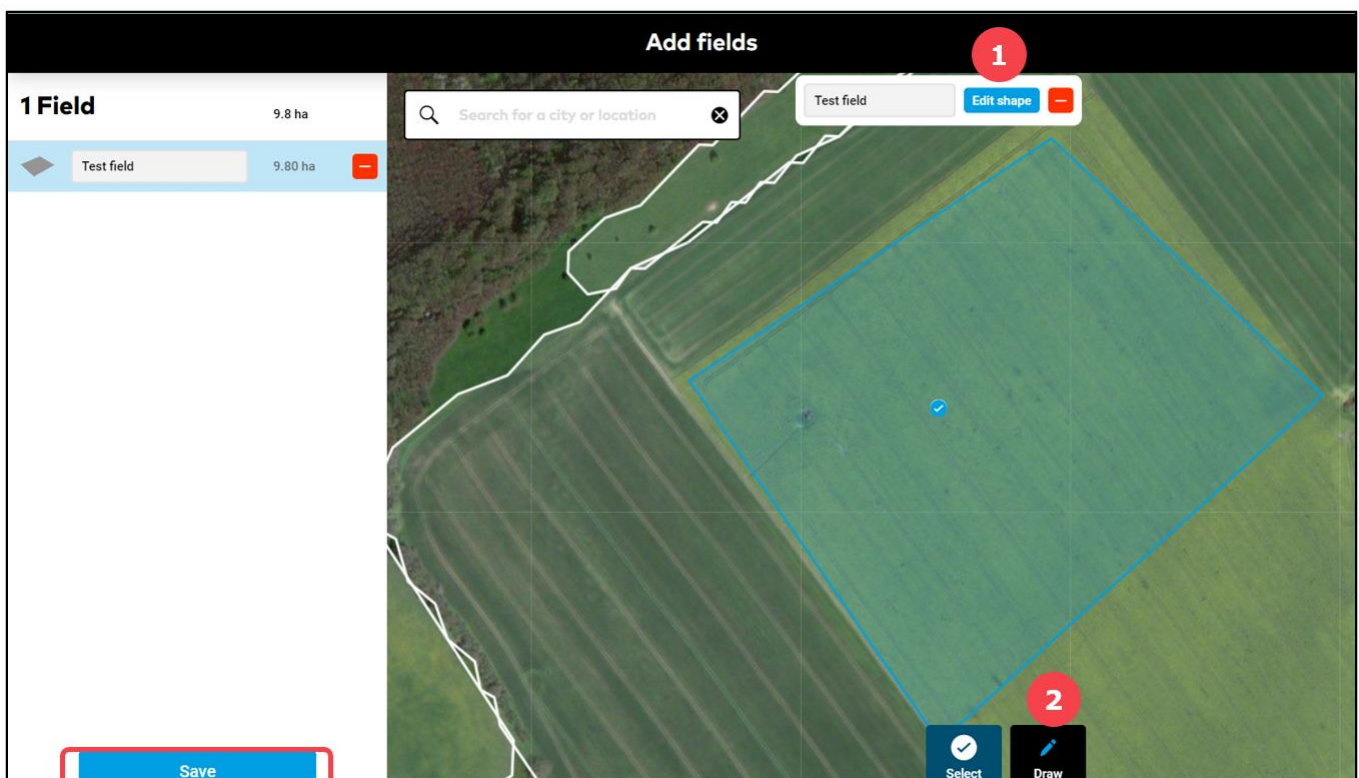
4. **Cut out** is used this to remove any unwanted part of a field - cut out a tree, a lake or separate your field into parts.

5. Click **Done** to save the boundary changes or **Discard** to cancel all.



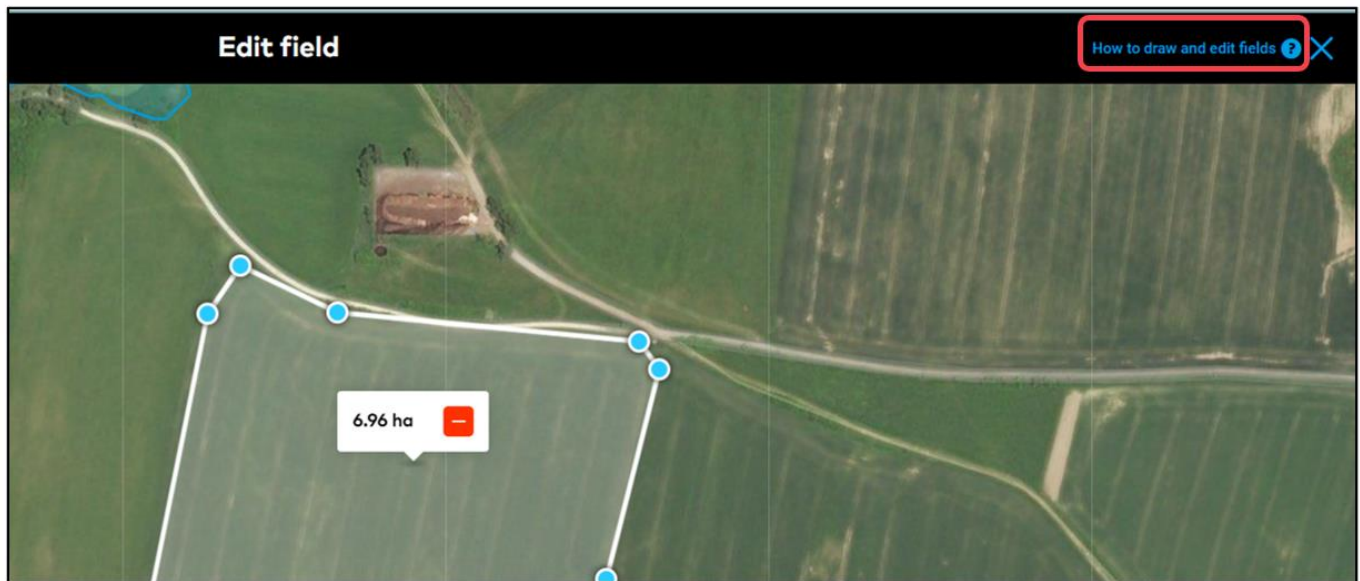
If you draw more than one shape, that will still count as one field.

- You can name your field and click **Save** to complete the process.



If required, you can:

1. Modify the boundary by clicking on **Edit** shape.
2. Add a new field by clicking on **Draw** again.



Have you got any questions?
We are here for you!

Toll free phone: +49 30 22957857
Email: support@xarvio.info
© 2021