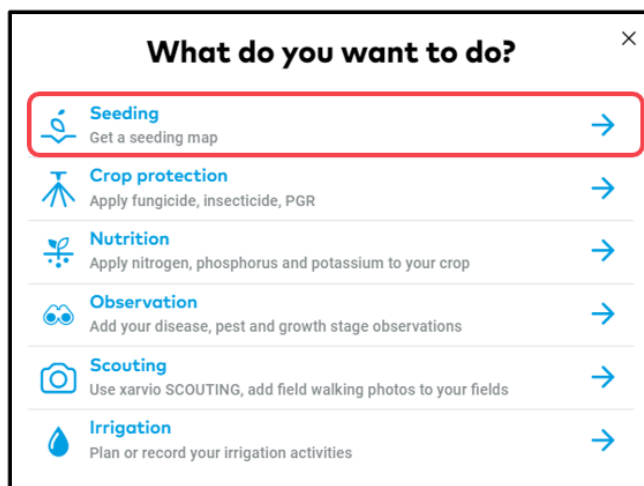


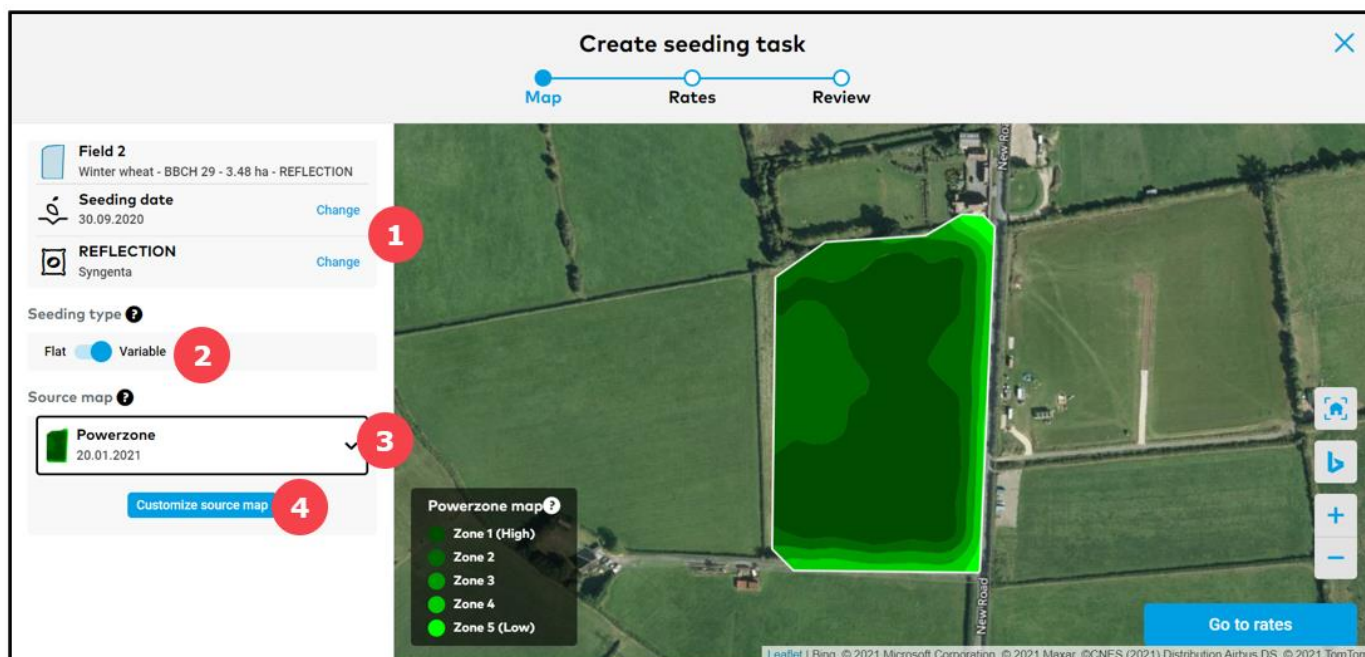
Creating a seeding task

xarvio FIELD MANAGER provides the possibility to create seeding maps based on the yield potential of each field zone, e.g. by analyzing historical biomass distribution. In addition, seeding maps can be manually adjusted or drawn. Furthermore, the variable seeding supports you in zone-based seeding rate and optimized seeding density.

- There are three ways to add a task in xarvio FIELD MANAGER.
- After clicking on **Add task** via any of the options mentioned above, a new screen showing the different types of task will be visible. Select **Seeding** to proceed.



- On the next screen, enter all essential information about the planned seeding task.



1. Click to change the **seeding date** and **variety**.
2. Switch between **Flat** and **Variable** seeding.



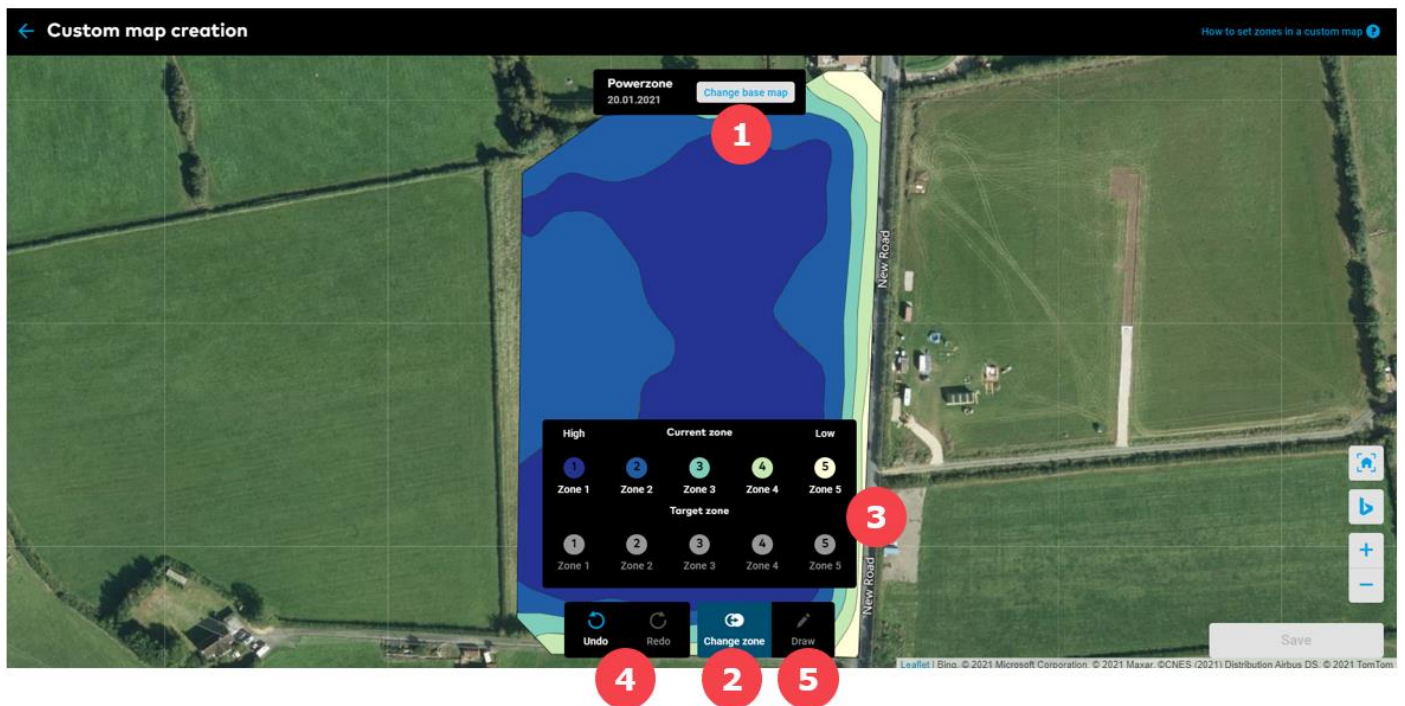
Flat seeding type means that the same seed rate will be applied to the whole field, whereas variable will apply zone-based seeding rate on the field.

3. Choose source map.

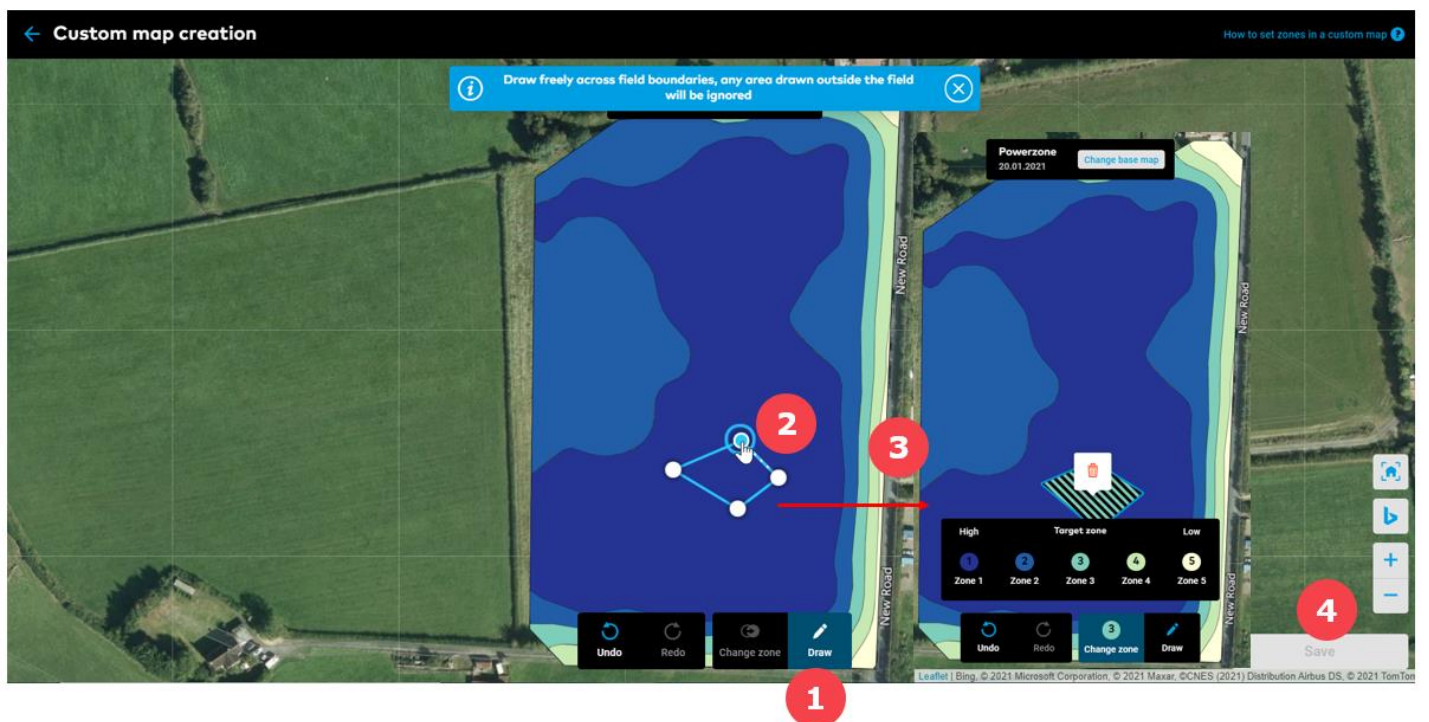


Currently, creation of variable seeding maps is based on available powerzone maps and uploaded yield map.

4. For manually creating a customized seeding map based on the source map selected above, click on **Customize source map** and you will be redirected to the seeding task creation window, where zones can be manually adjusted (reduce or replace or draw).

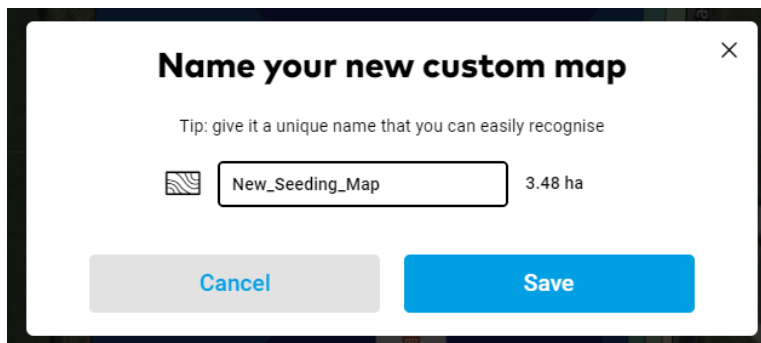


1. Change source map.
 2. Choose the option to **change zones**.
 3. Click on any zone in **Current** and replace it with your preferred zone in the **Target**.
 4. Helps to **Undo** or **Redo** any step.
 5. **Draw** preferred zones directly on the map.
- After selecting the option to **draw** a zone on the map, simply start with a left click and add points along the new zone. To close the shape, click on the first point (same as drawing a field boundary).

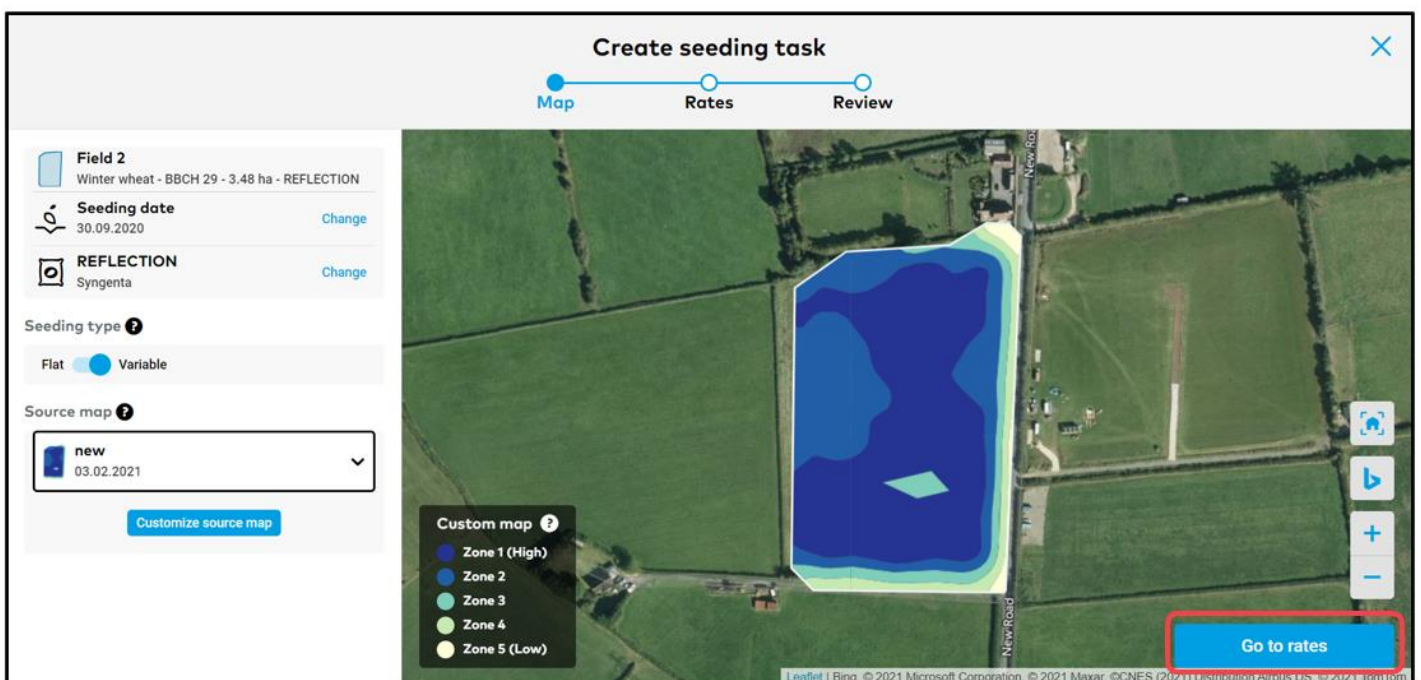


1. Select to draw

2. Draw the shape of the zone.
3. Set the number of preferred zones (**target zone**) when all points are combined into a shape.
4. After creating the zones, click **Save** and name of the map on the next screen.



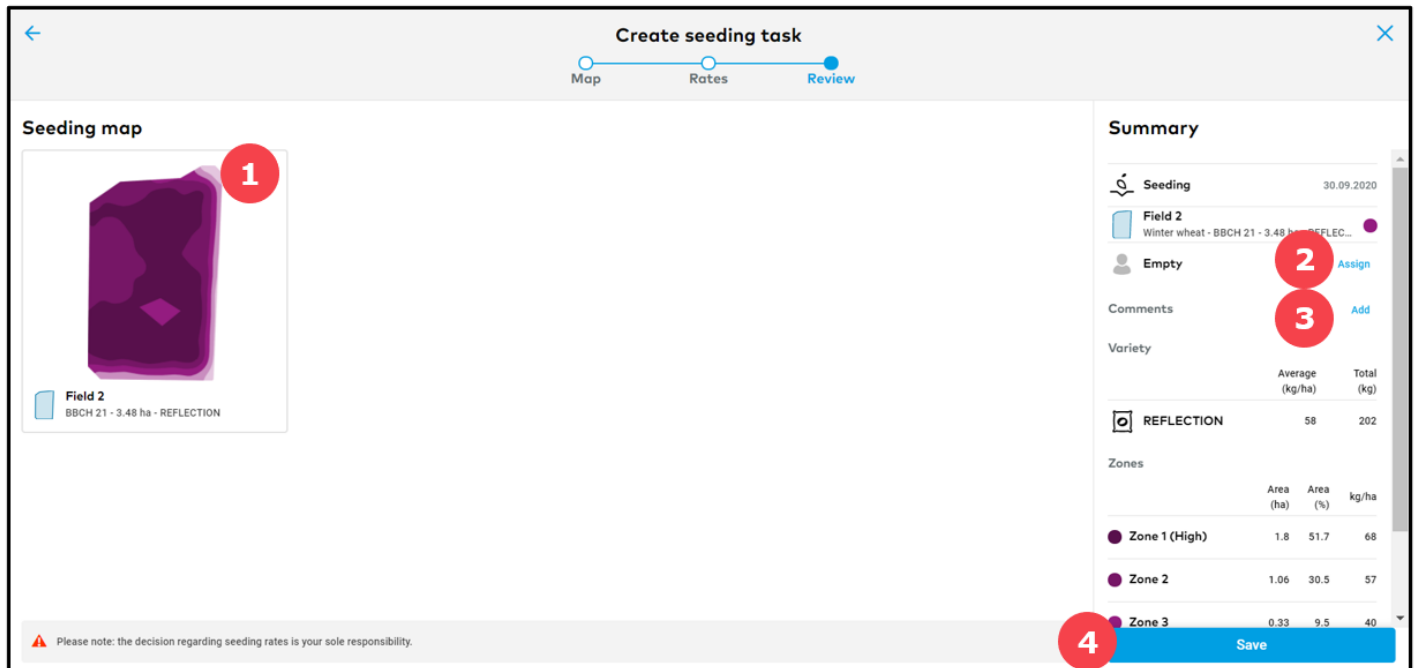
- After creating a map (automatically or manually), the next step is to set seeding rate.



- Click on the **Go to rates** button and enter the seeding rates for each zone for a variable seeding task or a single seeding rate for flat seeding task.



1. Change the unit of seeding rate.
 2. Enter desired seeding rate.
 3. Click **Review task** to proceed.
- On the next screen, review details and save task.



Seeding map

Field 2
BBCH 21 - 3.48 ha - REFLECTION

Summary

Seeding 30.09.2020

Field 2
Winter wheat - BBCH 21 - 3.48 ha - REFLEC...

Empty Assign

Comments Add

Variety

	Average (kg/ha)	Total (kg)
REFLECTION	58	202

Zones

	Area (ha)	Area (%)	kg/ha
Zone 1 (High)	1.8	51.7	68
Zone 2	1.06	30.5	57
Zone 3	0.33	9.5	40

Please note: the decision regarding seeding rates is your sole responsibility.

Save

1. This map is a projection of how seeds will be spread across the field.
2. Assign task to a specific xarvio FIELD MANAGER user or enter a name for documentation purposes.
3. Add your comments and notes.
4. Click **Save** to complete the task creation.



Have you got any questions?
We are here for you!

Toll free phone: +49 30 22957857
Email: support@xarvio.info
© 2021