



Transferring maps from terminal to xarvio FIELD MANAGER

xarvio CONNECT does not only give you the possibility to easily transfer application maps from xarvio FIELD MANAGER to your machine, it also allows you to upload as-applied maps (yield, fungicide) recorded by the terminal, directly into xarvio FIELD MANAGER for analysis.

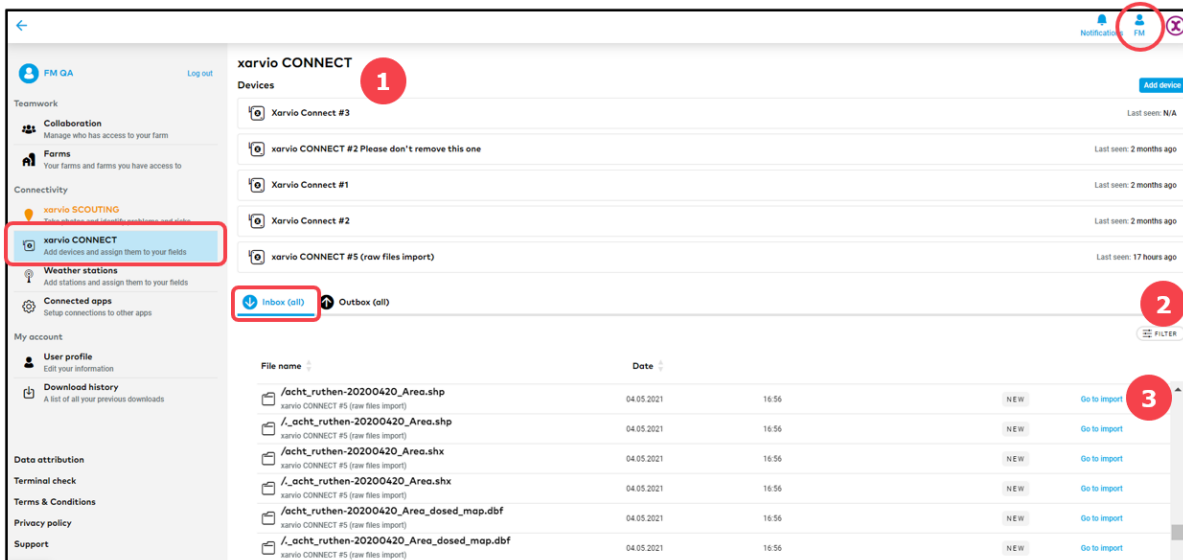
To do this,

- Use the **navigation** on your terminal to export the maps to the connected device.
- Disconnect the USB cable or turn off the terminal. The device will switch to transfer mode (red light).
- Maps are automatically **transferred** to xarvio FIELD MANAGER.



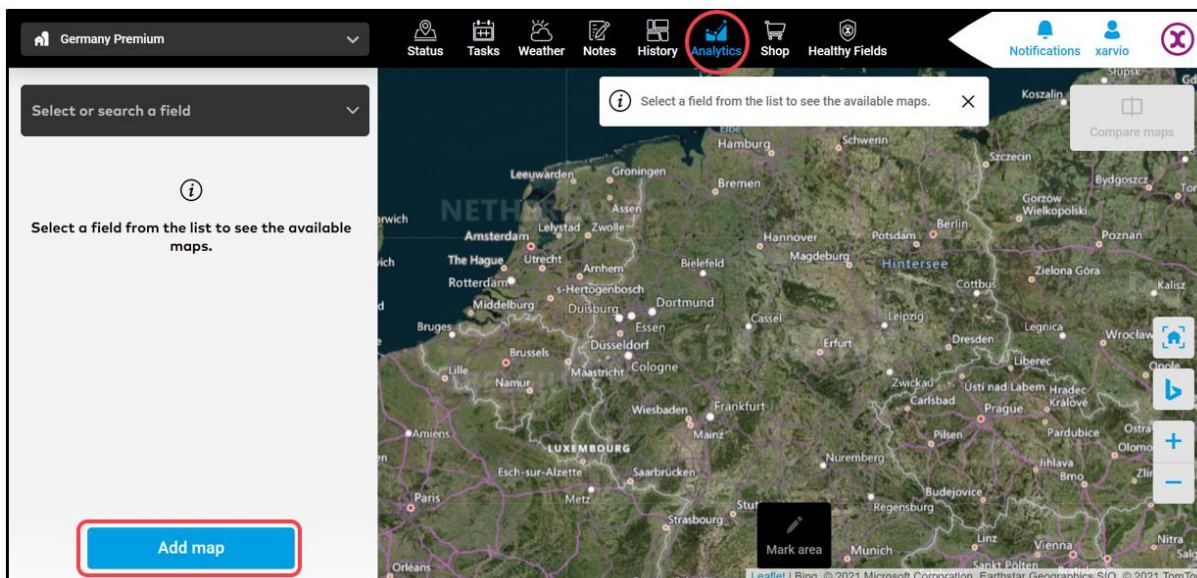
If the maps are still not in the xarvio FIELD MANAGER, use the mode switch button (A) to switch to transfer mode (red light). The transfer might take a few minutes.

- Transferred as-applied maps can be found in the **xarvio CONNECT section** (via user settings).

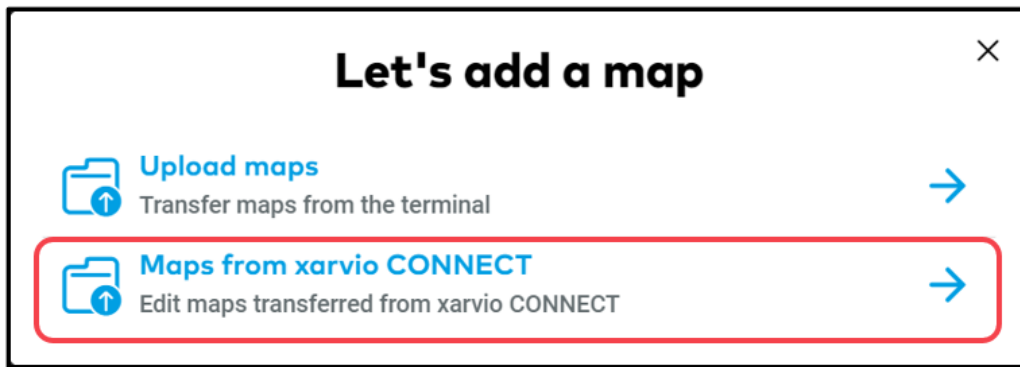


1. Select the device.
2. **Filter** the files by device, date or status.
3. Click to **import maps**.

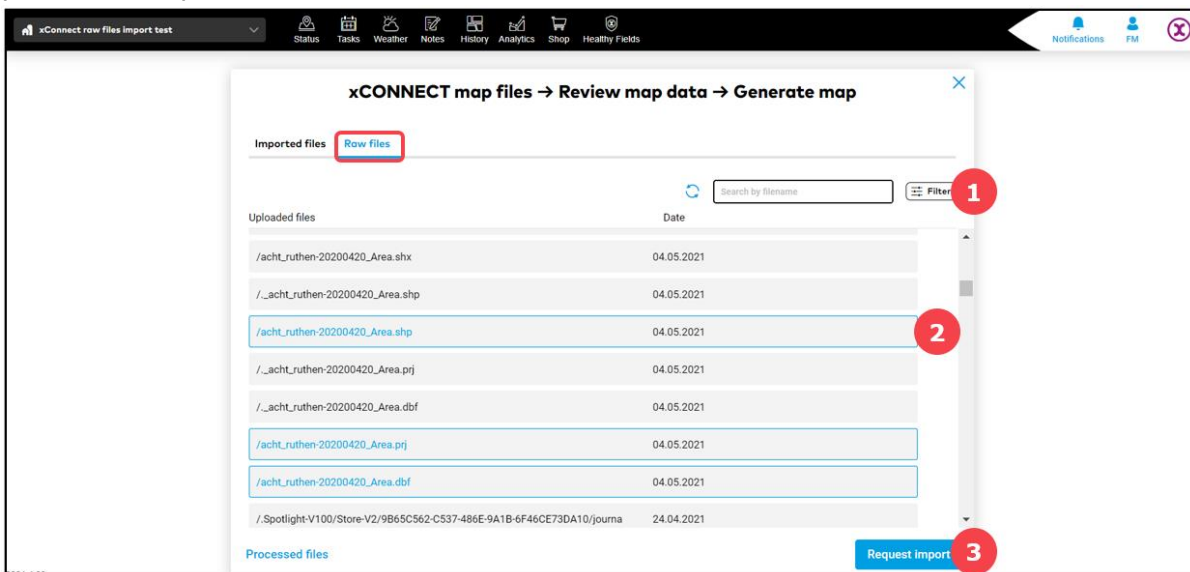
- Alternatively navigate direct to the maps import, in the **Analytics** section and click **Add map**.



- On the next pop-up, select **Maps from xarvio CONNECT**.

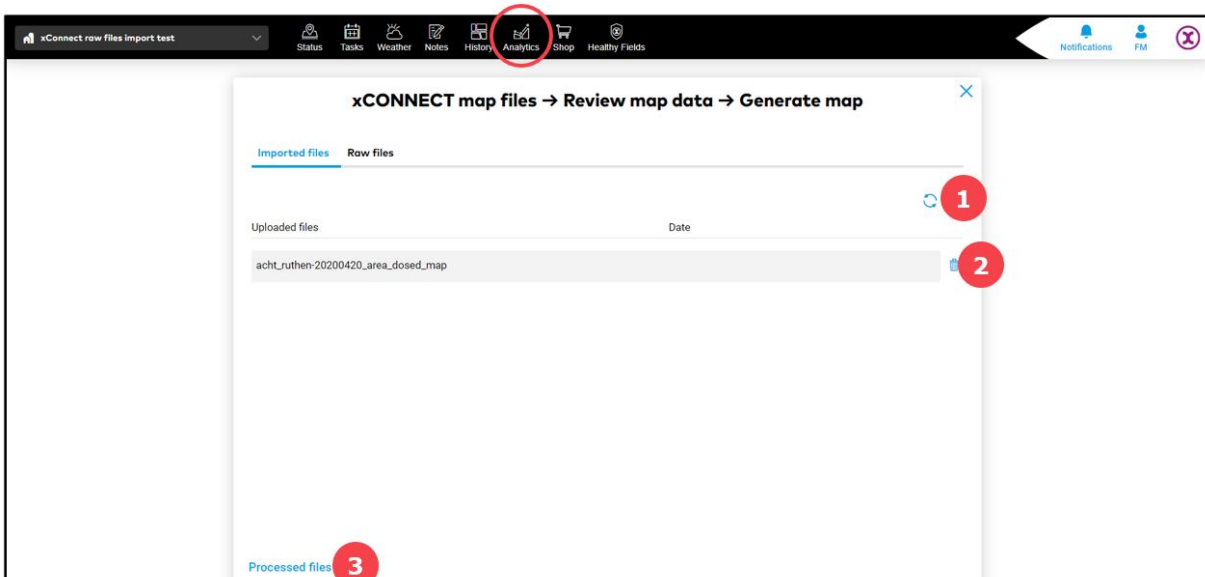


- In the **Raw files** tab, you will see a list of all uploaded files. Select all raw files related to the particular map.



1. Use **Filter** to search for maps transferred by specific devices.
2. Select all **row files** you would like to import.
3. Click **Request import** to proceed.

- Imported maps can be found in **Imported files** tab.



1. Click **reload** in order to display imported files.
2. Click to **remove** imported map.
3. Select to view all **generated maps** (as-applied, yield, seeding maps).



You can import few maps at once and review them separately.

- By clicking on map as a final step, you can **review it** and assign all required information.

1. **Select** a field.
2. Choose a corresponding **crop season**.
3. Select type of map you want to generate/analyse and enter all important data like applied mass and volume (fungicide, fertilizer and seeding map) with units, dry/wet mass and its volume (yield map).
4. Select **date** of map creation.
5. Click to go **back to imported files** list.
6. Click to **generate** map.

- Generated map can be found in the **Analytics** section.

1. **Select** from the drop down list a **field** with already created as-applied, yield or seeding map.
2. Click on the map to display **details**.
3. Option to **compare** two maps of the same or different fields.



Have you got any questions?
We are here for you!

Toll free phone: +49 30 22957857
Email: support@xarvio.info
© 2021