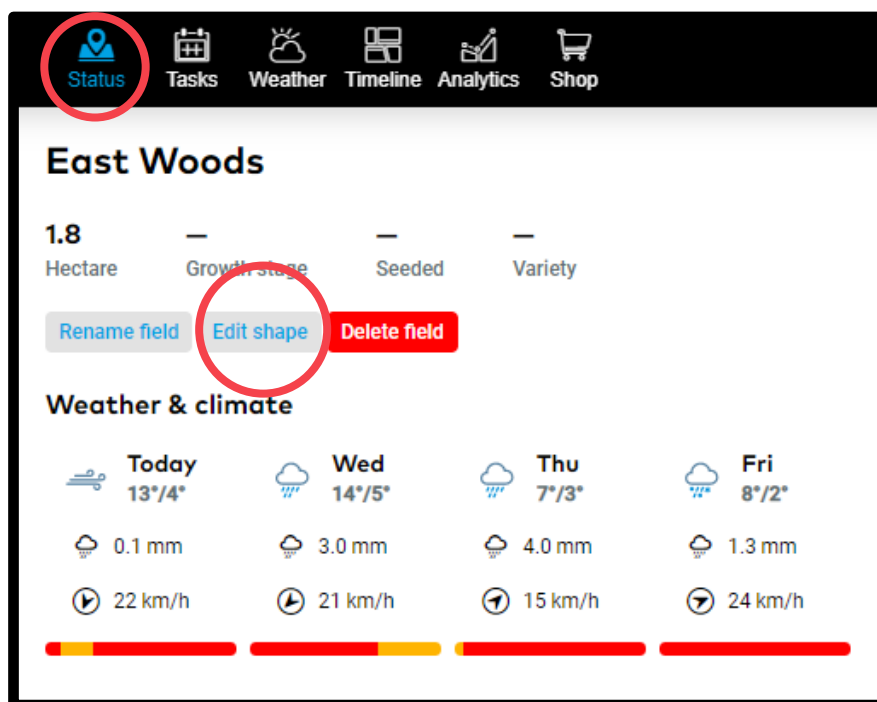


How to Edit Fields

Adjusting the field shape is very easy and quick to accomplish. This can be done while adding your fields or at later date in the **Status** menu, by using the **Edit shape** function.

- In the **Status** menu, click **Edit shape**



- In the new window, you will see your field highlighted and some tools which you can use to adjust it.
 - **To move a point**, drag and drop it
 - **Add a point**, click on the boundary and slightly drag it
 - **Delete a point**, move your mouse over the point, wait till it becomes red, then click on it



1. Draw

Draw a new shape that is treated as part of the field. This new shape can also be disconnected from the original shape.

2. Cut out

It is important to remove parts of the field you are not using. A tree or a windmill can cause problems when generating application parts maps.

3. Shape simplification

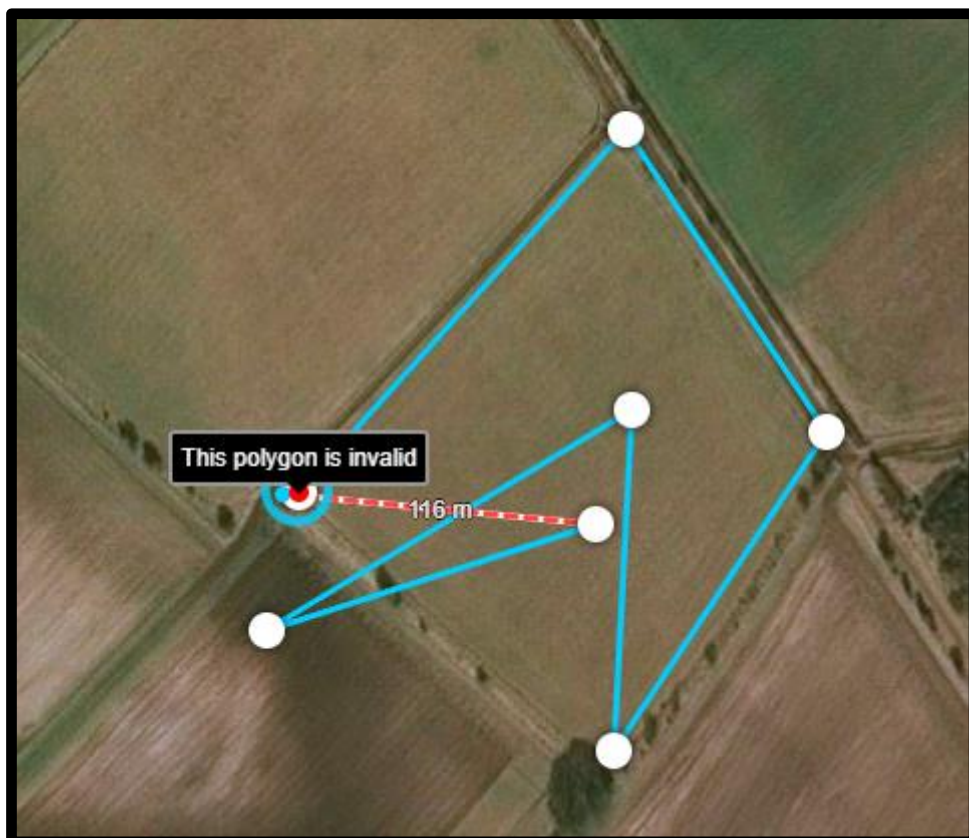
Makes it much easier to adjust fields by reducing the number of points in the shape



Move the slider towards Max to reduce the number of points, then move, add or delete any of them.



If you have the shape overlapping itself, you will get an error message.



Have you got any questions?
We are here for you!

Toll free phone: +49 30 22957857
Email: support@xarvio.info
© 2020